



57460 Dewitt Street ▪ Elkhart, Indiana 46517-1078
Phone (574) 293-9096 ▪ Fax (574) 294-3450
800-628-2957 ▪ Web site: www.rpiroyaledge.com



ARCHITECTURAL SPECIFICATIONS NON-PENETRATING BATTEN SYSTEM

N 1.00

GENERAL

- NI.01 APPLICABILITY
- NI.02 RELATED WORK
- NI.03 QUALITY ASSURANCE AND WARRANTY
- NI.04 DESIGN CONSIDERATIONS
- NI.05 ROOF DRAWINGS
- NI.06 ROOF DECK AND FLASHING SURFACES
- NI.07 JOB CONDITIONS
- NI.08 STORAGE OF MATERIALS
- NI.09 SURFACE PREPARATION

N2.00

MATERIALS

- N2.01 MEMBRANE AND FLASHING MATERIAL SPECIFICATIONS
- N2.02 COMPONENT MATERIALS

N3.00

WORKMANSHIP AND APPLICATION

- N3.01 INSULATION INSTALLATION
- N3.02 MEMBRANE INSTALLATION
- N3.03 SPLICING
- N3.04 NAILERS
- N3.05 FLASHING
- N3.06 NIGHT SEAL
- N3.07 WALKWAY PADS
- N3.08 PROTECTION
- N3.09 CLEANUP

A Royal Edge EPDM Roofing Membrane is partially adhered to an approved insulation or substrate six (6) feet around the roof perimeter and to a twelve (12) inch wide Nylon Fabric strip in the field of the roof using RPI Bonding Adhesive. An RPI approved FM or UL insulation is fastened as per local wind requirements and/or specifications. Flashing and termination details are shown on the detail sheets. Splices and seams should be made using RPI Seam Tape Primer and RPI Seam Tape.

NI.00 GENERAL

NI.02 APPLICABILITY

The RPI Non-Penetrating Batten System is appropriate for most commercial and industrial applications. Consult RPI Technical regarding roofs with the following conditions.

1. Exhaust fans discharging chemical or petroleum products onto the roof.
2. Irregular slopes.
3. Slopes greater than 1" in 12".
4. Roofs classified Zone III by Factory Mutual's Loss Prevention Data Bulletin 1-28.
5. Roofs subject to special code requirements
6. Ponding Water.

NI.02 RELATED WORK

It is RPI's policy not to warrant metal, nailers, tie-ins, or other materials not sold or manufactured by RPI. Because the roofing integrity depends on this related work, please refer to detail drawings for recommended fastening and membrane related installation. It is the duty of the contractor to notify the architect or owner of any defects or design problems prior to installation of the Royal Edge Roofing System.

NI.03 QUALITY ASSURANCE AND WARRANTY

A twenty (20) year Limited Membrane Only Warranty is available for .060 membrane, and a ten (10) year Limited Membrane Only Warranty is available for .045 membrane. A Labor and Material Warranty is available through the RPI Registered Applicator Program, after all requirements are met. Refer to the Warranty Section of this manual for further information regarding Limited Membrane Only, and Labor and Warranties. high density fiberboard, ½ inch CDX plywood, 1/8 inch tempered hardboard, or 7/16 inch All membrane and components of the installation system must be supplied or approved by RPI.

The Warranty shall be in effect upon the date of completion pending final inspection and payment of required fees and completion of inspection punchlist items. All invoices for RPI materials used on the installation must be paid in full to RPI or RPI suppliers.

NI.04 DESIGN CONSIDERATIONS

SUBSTRATE

It is the installer's responsibility to inspect the substrate for defects or incompatibility with RPI's Royal Edge Roofing System and to notify the owner, architect, or general contractor if problems are encountered. Different decks may require an acceptable air or vapor barrier, insulation, or recover board. Pull-out tests for fasteners are recommended for mechanically attached insulations. Documentation of installation requirements for the insulation adhesive must be provided to RPI before the installation begins.

Acceptable roof decks:

1. Fluted steel: 24 gauge or heavier. Mechanical fasteners and approved adhesives may be used for applying insulation/recover boards. Contact RPI with questions about approved adhesives.
Due to the fluted design of steel decks, the appropriate mechanical fastener must be of a sufficient length to assure a minimum of 3/4 inch penetration thru the top or bottom of the deck flute.
2. Structural concrete: Rated at 3500 psi or greater, containing no light weight aggregate. Insulation may be attached by one of the following methods:
 - a. Mechanical attachment using a minimum one (1) inch penetration with a compatible concrete fastener.
 - b. Adhering using approved adhesives. Contact RPI for approved products.
3. Wood plank: (minimum 1 inch thickness) or APA grade CDX Plywood (minimum 5/8 inch thickness), or OSB (Oriented Strand Board), with one (1) inch penetration into or through the deck RPI approved fasteners.
4. Gypsum: precast, or poured in place concrete, through which compatible type fastener is employed.
5. Light Weight Insulating Concrete: mesh reinforced, over composite form board decking, through which an RPI approved fastener is attached. Contact RPI Technical.
6. Cementious fiber (Tectum): through which an RPI approved fastener is attached. Contact RPI Technical.

WOOD NAILERS

Wood nailers are recommended at all of the following:

1. All roof edges where insulation thickness is greater than 1/2 inch thick for reroofing, and all roof edges in new construction.
2. All expansion joints.
3. All pitch pockets greater than twelve (12) inches on any side.
4. Refer to RPI detail drawings or other nailer recommendations.

Wood nailers shall extend beyond, and support the entire flange of all sheet metal.

VAPOR BARRIERS

Vapor barriers are recommended where high humidity/moisture condensation is a concern, and on freezer and other refrigerated cooling structures.

As an condensation precaution, vapor barriers should be used when the following conditions are anticipated:

1. Outside average temperature is below 40° F
2. Expected interior relative humidity is 45 % or greater (indoor pools, spas, and other high moisture facilities).

INSULATION

Must meet ASTM's as specified for each type of Insulation.

ROOFING CONSIDERATIONS

The owner or designate is responsible for the design and engineering of the roof deck and the compatibility of RPI's Royal Edge Roofing System with the roof deck.

All roof membrane and accessories shall be supplied or approved by RPI.

The roofing contractor shall not proceed with the installation until all defects in the substrate or the structural deck have been corrected.

Flashings and membranes must extend up a minimum of eight (8) inches on all protrusions and a minimum of twelve (12) inches on all parapet walls. If it is impossible to achieve the minimum application height, notify RPI.

Royal Edge EPDM Membrane cannot be adhered to uneven surfaces such as stucco, insulated wall panels, textured masonry, or corrugated metal.

RPI shall not be responsible for failure or damage to The Royal Edge Roofing System caused by errors in the underlying design, engineering, quantities or dimensions of the roofing system.

WALKWAY PADS

It is required that walkway pads or pavers are to be installed at all points of access to the roof and all units requiring regular maintenance.

NI.05 ROOF DRAWINGS

In accordance with the warranty program, overall roof drawing or diagram showing the dimensional size of the buildings roof system as well as the locations of all protrusions and penetrations must be represented on the "Job Start Notification Form".

Flashings, perimeter, and termination details shall be identified on the roof diagram or itemized on the penetration detail sheet.

NI.06 ROOF DECK AND FLASHING SURFACES

Surfaces shall be free of sharp projections, and swept clean of all dust, dirt, and debris.

All surfaces, old or new, shall be free of contaminants such as, but not limited to, asphalt, oil, grease, cement scale, paint, and similar materials.

If vertical surfaces will not accept Bonding Adhesive, the surfaces must be covered with a minimum 1/2 inch thick high density fiberboard, 1/2 inch CDX plywood, 1/8 inch tempered hardboard, or 7/16 inch OSB properly fastened to the parapet or vertical walls. Fasteners must be a minimum of one (1) fastener per two (2) square feet.

All applications shall be terminated a minimum of twelve (12) inches above the roof deck wherever possible.

NI.07 JOB CONDITIONS

Do not install, or proceed with the installation of Royal Edge Roofing Systems during inclement weather. Temperatures below 40⁰ F require all details of the installation be constantly monitored for moisture condensation and proper adhesive cured time. Follow precautions for the storage and use of materials in cold weather. Keep adhesives, caulks, and tapes in a room temperature storage room or warm box.

NOTE: Adhesive drying (flash-off) time is extended in cold temperatures. Heat guns may be necessary to assist in the proper application of flashings and seams.

DO NOT INSTALL ROYAL EDGE MEMBRANE OVER FROST, ICE, SNOW, OR MOIST OR SATURATED INSULATION.

WARNING: DO NOT BREATHE VAPORS OF ADHESIVES OR SEALANTS. DO NOT USE THEM NEAR A FIRE, OPEN FLAME OR OTHER SOURCE OF IGNITION. VAPORS THAT ARE ALLOWED TO BUILD UP MAY BE HIGHLY EXPLOSIVE. ADHESIVES AND SEALANTS ARE EXTREMELY FLAMMABLE. MATERIALS USED IN SPLICING PROCEDURES ARE EXTREMELY FLAMMABLE. DO NOT ALLOW ADHESIVES, FLASHINGS, OR SEALANTS TO FREEZE.

Do not use oil based or asphalt based roof cement to adhere Royal Edge Cured Membrane. Asphalt roof cement may be applied to Uncured EPDM membrane in specific tie-in details. Refer to RPI Specifications. Do not allow waste products such as petroleum, oils, grease, solvents, vegetable or mineral oil, animal fat, or direct steam venting to come into contact with Royal Edge EPDM products.

NI.08 STORAGE OF MATERIALS

All materials shall be stored in their original tightly sealed containers or unopened packages and shall be clearly labeled with manufacturer's name, brand name, and batch number of the material. All materials except the Royal Edge Membrane shall be stored out of the weather in a clean dry area. Liquid materials such as adhesives, cleaners, caulks, and other flammable items shall be stored in areas away from sparks, excessive heat, open flames, and other sources of ignition.

WARNING: ADHESIVES ARE FLAMMABLE. FUMES AND VAPORS FROM ADHESIVES OPENED IN CONFINED SPACES ARE EXPLOSIVE AND TOXIC. USE ONLY IN OPEN, WELL VENTILATED AREAS.

Store materials, except for the Royal Edge Membrane. between 60° and 80°F. If exposed to lower temperatures, restore to proper temperature before using. Damaged materials will be replaced at contractor's expense.

NI.09 SURFACE PREPARATION

The owner, architect, or designate shall be responsible for providing a structurally sound and proper roof deck to receive the Royal Edge Roofing System. The roofing contractor shall notify the owner or designate, in writing, of defects in the substrate and work shall not proceed until defects have been corrected.

Surfaces on which the Royal Edge Membrane is to be applied shall be clean, smooth, and free of spines, sharp edges, loose, and foreign material such as oil and grease.

Before laying insulation board, the roof surface must be power broomed or vacuumed to remove loose gravel, dirt, and debris. The roof deck must be completely dry and free of contaminants.

Prior to installation, all unused pipes, skylights, curbs, and other protrusions should be removed.

N2.00 MATERIALS

N2.01 MEMBRANE AND FLASHING MATERIAL SPECIFICATIONS

Membrane for this work shall conform to the specifications contained in the General Section page G-7 of this manual and shall be a nominal .060 mil thick Royal Edge EPDM (ethylene propylene diene monomer) compounded elastomer.

Flashing materials shall be Royal Edge nominal .060 mil thick, uncured EPDM Flashing Membrane.

WARNING: SHEET MEMBRANE IS SLIPPERY WHEN WET.

N2.02 COMPONENT MATERIALS

All component materials necessary for the proper installation of the Non-Penetrating Batten system are to be furnished by Roofing Products International, Inc. Use of component materials furnished by other vendors will void any express or implied warranties in connection with the performance of the system.

1. Bonding Adhesive (Solvent Based)
2. Splicing Adhesive (Rubber-to-Rubber)
3. Seam Tape
4. Seam Tape Primer
5. Lap Caulk (Paste Sealant)
6. Membrane Cleaner
7. Pourable Sealer
8. Water Cut Off Mastic
9. Termination Bar and Fasteners
10. Fasteners
11. Uncured Flashing membrane
12. Prefabricated Pipe Boots
13. Walkway Pads
14. Prefabricated Drain Sleeves
15. One-Way Moisture Vents
16. 12" Nylon Fabric
17. Batten Bar

N3.00 WORKMANSHIP AND APPLICATION

N3.01 INSULATION INSTALLATION

Any UL or FM approved insulation that is compatible with the adhesives is acceptable. Comply with the manufacturer's instructions for installation.

Insulation board shall be laid on the roof surface and butted together. Stagger the joints with no gaps greater than 1/8 inch. If more than one (1) layer is used, offset joints of the first layer to the joints of the second layer.

The insulation layout for this application is as follows:

1. Install first piece of insulation with the four (4) foot width at outside corner along perimeter edge, install second piece of insulation with the eight (8) foot length along the perimeter edge.

NOTE: This pattern should be maintained through out the entire roof area.

Unless otherwise required, insulation should be installed according to these instructions. If not, then install to insulation manufacturer's published recommendations.

Do not lay more insulation board than can be covered with the Royal Edge Membrane by the end of the working day.

Please refer to the UL and FM Classification Directories for additional information on insulation fastener patterns.

N3.02 MEMBRANE INSTALLATION

For FM I-90 ratings, a 6 mil polyethylene air barrier must be installed over the roof deck.

Starting at the high point of the roof, picture frame the roof starting six (6) foot in from the perimeter edge with the RPI Nylon Fabric. Next, lay the twelve (12) inch wide Nylon Fabric strips on seven (7) foot centers beginning six (6) feet in from perimeter edge of roof. Lay the fabric in a straight line making sure it is accurately on seven (7) foot centers. Secure the Fabric down the center using RPI's one (1) inch wide by ten (10) foot long Batten Bar, making sure to maintain one (1) inch wide space between ends of each ten (10) foot piece. Secure with a fastener of sufficient length to penetrate the roof decking a minimum of one (1) inch. Picture frame all penetrations and protrusions with the nylon fabric making sure to place the batten bar a minimum of two (2) inches from the penetration or protrusion. Align the nylon fabric against protrusion or penetration.

After mechanically attaching fabric strips and batten bar to cover the insulation/recover board, lay out the first sheet.

Lay the Royal Edge Membrane over the insulation, removing all wrinkles and arrange the sheet exactly to the desired position. **NOTE:** Avoid stretching the membrane.

Allow the Royal Edge Membrane to relax a minimum of 15 to 20 minutes and allow a six (6) inch overlap to adjacent sheets (for Splice Adhesive). Allow four (4) inch overlap for Seam Tape Installation.

Fully Adhere the Royal Edge Membrane for the first six (6) feet around the perimeter of the roof and up parapet walls. The sheets that begin after this six (6) foot fully adhered area need only be adhered where it will come in contact with the twelve (12) inch Nylon Fabric. Align folded Royal Edge Membrane along fabric. apply bonding adhesive to the fabric, and the underside of the Royal Edge Membrane, avoiding globs, or puddles. Let dry until tacky. Mate the two (2) adhesive coated surfaces, then advance to your next twelve (12) inch wide fabric strip.

The areas of the Royal Edge Membrane that are adhered to the nylon fabric must be rolled with a roller or broomed with heavy pressure to assure 100% adhesion.

Fold back the membrane so that one-half (1/2) of the underside is exposed. Be sure that the sheet fold is smooth and free of wrinkles.

Mix the bonding adhesive by thoroughly stirring the adhesive from the bottom of the container until all solids are thoroughly blended. **DO NOT USE AN ELECTRIC TOOL TO MIX THE ADHESIVE.**

Using a solvent accepting paint roller or a spraying device, apply an even coat of adhesive, avoiding globs and puddles, to both the Royal Edge Membrane and the insulation/substrate. Solvent based bonding adhesive should be applied in an even coverage of approximately 300 square feet per five (5) gallon can.

DO NOT APPLY BONDING ADHESIVE TO THE SPLICE AREAS.

Allow bonding adhesive to dry to the touch (Not stringy to the finger touch). Roll coated sheet of Royal Edge Membrane onto coated insulation/substrate at the six (6) foot perimeter, making sure to keep the middle of the sheet ahead of the ends so as to avoid wrinkles.

Using a stiff push broom, mate the bonded portion of the sheet to the substrate to insure 100% adhesion.

Repeat the process with the remaining sheets.

N3.03 SPLICING

A. SPLICE ADHESIVE

1. Fold the sheet back to effect a minimum six (6) inch splice.
2. Clean both mating surfaces with a sponge mop saturated with RPI Membrane Cleaner. It is extremely important to frequently dip the sponge mop to remove all talc, dirt, and other contaminants.
3. Apply RPI Splicing Adhesive to both mating surfaces, extending a minimum of one (1) inch beyond the splice area, using a solvent resistant paint brush or roller. Adhesive should be applied at a minimum rate of approximately 130 to 140 lineal feet of six (6) inch splice per one (1) gallon. Brush or roll on the splicing adhesive to obtain 100% coverage. Do not allow the adhesive to glob or puddle. Allow adhesive to dry until tacky (i.e. not sticking to a dry finger touch).
4. Roll the top membrane onto the bottom membrane and allow it to fall freely into place without stretching or wrinkling (fishmouths). Immediately apply pressure to bring the bonded surfaces into 100% contact.
5. Using a steel hand roller, roll the entire length of spliced area toward the outer edge at a 45° angle.
6. Clean the spliced edge with RPI Membrane Cleaner, extending a minimum of one (1) inch onto the top and bottom sheets to remove all talc, dirt, or other contaminants.
7. Apply a minimum 1/4 inch bead of RPI Lap Caulk along the edge of the splice forming a bridge between the two mated sheets of the Royal Edge Membrane. Do not feather or tool the bead of lap caulk.

NOTE: It is advisable to allow the seam to cure for twenty four (24) hours prior to applying the lap caulk in order to allow all the adhesive solvents to dissipate. If adverse weather conditions are expected, apply the lap caulk at the end of the day.

B. SEAMTAPE

1. Using a marking crayon or chalkline, make a mark 1/2 inch from the overlap seam edge.
2. Open the seam area. Using an RPI Scurb Pad, apply the Seam Tape Primer to both surfaces. Apply the Primer in a back and forth motion until the primer attains a flat dark grey appearance with no heavy wet areas. The RPI Seam Tape Primer should be applied at the minimum rate of 200 to 250 lineal feet per one (1) gallon.
3. **NOTE:** When using a chalk line, pre-snap the chalk line to remove excess chalk dust. Seam tape will not adhere to chalk dust. **DO NOT ALLOW THE PRIMED AREA TO BE CONTAMINATED.**
4. Line up the seam tape release paper with the mark, (chalk line) and position the seam tape with the release paper in place. Keep the Seam Tape as straight as possible. The tape has a very aggressive tack; do not touch the tape, and never permit the tape surface to touch itself. Hand roll the tape release paper in place to assure complete contact with the bottom membrane. If the tape is not fully adhered to the bottom membrane, it may roll onto itself when the release paper is removed.
5. Begin to remove the release paper from the tape by removing the paper from the back to the front of the seam edge by peeling the paper at a 90° angle. As the paper is being removed, fold the top membrane onto the exposed tape and mate the surfaces by drawing your hand across the top of the seam. Take care not to entrap air pockets in the tape. If air pockets form, leave them in place.
6. When finishing one roll, overlap the end of the next roll onto the end of the previous roll a minimum of 1 inch. Knead the ridge that will be formed with a steel hand roller.
7. Using a steel hand roller, roll the entire length of spliced area toward the outer edge at a 45° angle, and then length wise to assure 100% Adhesion.

8. Clean the spliced edge with RPI Membrane Cleaner, extending a minimum of one (1) inch onto the top and bottom sheets to remove all talc, dirt, and other contaminants.
9. Apply a minimum 1/4 inch bead of RPI Lap Caulk along the edge of the splice forming a bridge between the two mated sheets of the Royal Edge Membrane at all seamtape roll overlaps. Do not feather or tool the bead of lap caulk.

C. T-JOINTS

I. SPLICING ADHESIVE

All T-joint splice intersections are to be patched over using a minimum six (6) inch diameter uncured Royal Edge Membrane with rounded corners centered over the T-joint. Using a steel hand roller, roll the entire patch attaining 100% adhesion. Apply a minimum 1/4 inch bead of RPI Lap Caulk along the exposed edge forming a bridge between the two sheets of membrane. Do not feather or tool the bead of lap caulk.

2. SEAM TAPE

All T-joint splice intersections are to be patched over using a minimum six (6) inch diameter uncured Royal Edge Membrane with rounded corners centered over T-joint. Using a steel hand roller, roll the entire patch attaining 100% adhesion. Apply a minimum 1/4 inch bead of RPI Lap Caulk along the exposed edge forming a bridge between the two sheets of membrane. Do not feather or tool the bead of lap caulk.

N3.04 NAILERS

Nailers are required to be installed at the perimeter of each roof level, curb flashing, skylight, expansion joints, and similar penetrations. Wood nailers shall be installed at all gravel stop or drip edge perimeters of each roof level. Pressure treated wood nailers are recommended but not required.

Attach wood nailers to resist a wind force of one hundred twenty five (125) pounds per lineal foot or as recommended by FM Loss Prevention Data Bulletin 1-49. The thickness of the nailer shall be such that the top is flush with the surface to which the Royal Edge Membrane is to be applied.

N3.05 FLASHING

Flashing should be installed in accordance with RPI detail drawings.

Cured Royal Edge Membrane is to be used for flashing parapet walls and curbs. Refer to RPI's standard flashing detail drawings.

Uncured Royal Edge Membrane is to be used on all outside corners, vents, chimneys, skylights, and pipes. Two (2) layers of uncured Royal Edge Membrane are to be used on all flashings of outside corners and pipes. One layer is applied on radical bends of field seams and T-joints. Install the Royal Edge Uncured with/without Tape.

Refer to RPI's standard flashing details.

PARAPET WALLS AND CURBS (cured Royal Edge Membrane)

1. Surface should be clean and free of contaminants, loose old flashings, have to be removed.
2. Apply bonding adhesive to parapet wall, or curb, and the Royal Edge Membrane. Extend the cured Royal Edge Membrane up the parapet wall in one piece to the termination point twelve (12) inches minimum above deck.
3. Alternate method for parapet walls:
 - a. Cut Royal Edge Membrane at base of wall, or extend it up parapet a minimum of two (2) inches above roof deck.
 - b. Mechanically attach membrane using RPI's Batten Bar and approved fasteners. Mechanically attach the batten bar every twelve (12) inches.
 - c. Lay out the cured Royal Edge Membrane to extend up the parapet wall or curb a minimum of twelve (12) inches, and will extend onto the deck a minimum of six (6) inches.
 - d. Apply RPI Bonding Adhesive to parapet wall or curb and the Royal Edge Membrane. Apply RPI Splice Adhesive to batten bar and Royal Edge Membrane making sure to extend out onto the roof deck a minimum of six (6) inches. (Splice Adhesive)

4. Where a field seam changes slope angle or plane, a six (6) inch wide by twelve (12) inch long piece of uncured Royal Edge Membrane with/without Tape must be installed over the center of the seam. The uncured strip should extend up the parapet wall and onto the deck a minimum of six (6) inches.

EXPANSION JOINTS

1. See RPI standard detail for expansion joints.

DRAINS

1. Drains with clamping rings: Refer to RPI standard drain detail.
2. Drains using RPI one piece sleeve: Refer to RPI standard sleeve detail.

For various flashing termination's, refer to RPI's detail drawings.

N3.06 NIGHT SEAL

Care should be taken to insure that water does not flow beneath any completed sections of the roof. When weather is threatening, loose edges of the Royal Edge Membrane should be temporarily sealed with RPI's Royal Edge Uncured Membrane, water cut-off mastic, or pourable sealer, when finishing up for the day.

Gravel should be scraped down to the felts on the existing built up roof in the area where the temporary night tie-in is to be made for proper night sealing.

Apply water cut off mastic at a minimum rate of twenty (20) lineal feet per tube on a smooth surface. Twelve (12) inches back from the edge of the sheet onto the exposed surface. A trowel should be used to spread the material in order to achieve complete sealing. This coverage may be reduced on existing built-up roof surfaces according to surface preparation.

After embedding the Royal Edge Membrane in the RPI water cut off mastic or pourable sealer, check for continuous contact. Weight the edge, providing continuous pressure over the length of the tie-in.

RPI does not assume responsibility for any night seal.

N3.07 WALKWAY PADS

RPI roof walkway pads or pavers are required in areas whenever foot traffic is anticipated.

See RPI standard detail.

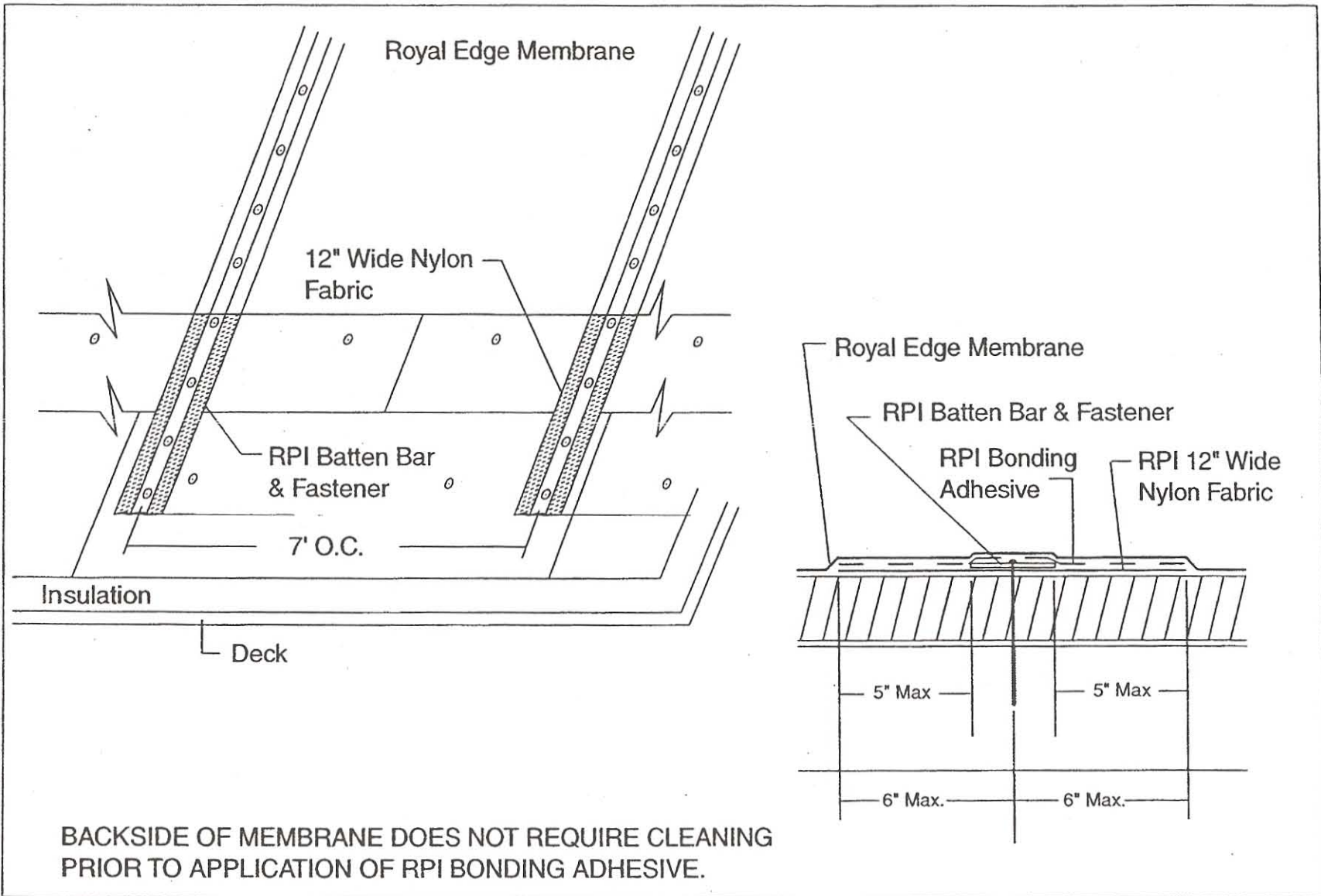
N3.08 PROTECTION

- a. The contractor shall protect this system from all trades not directly under his supervision.
- b. Any damage to this system shall be repaired before warranty acceptance of the system, and the cost of the repairs will be borne by those responsible for such damages.

N3.09 CLEAN UP

The applicator shall remove all materials and debris from the work and storage areas, and leave those areas in an undamaged and acceptable condition.

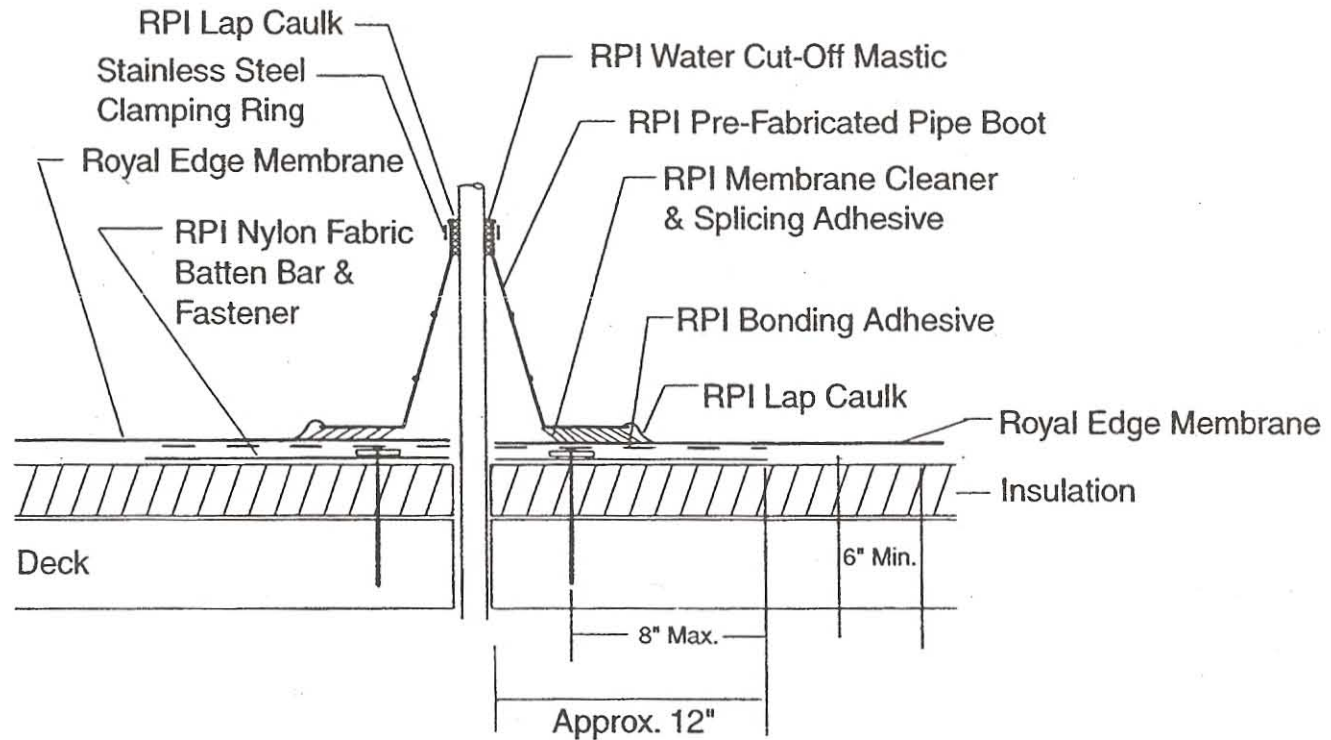
As a supplier of materials only, Roofing Products International, Inc., 57460 Dewitt Street, Elkhart, IN 46517 does not assume responsibility for errors in design, engineering, quantities or dimensions. All materials are to be applied in strict accordance with manufacturer's printed instructions. Specifier to verify all dimensions, sizes and structural soundness.



NP-2
MEMBRANE ATTACHMENT NYLON FABRIC
(BATTEN BAR & FASTENERS)



FOR PIPES BETWEEN 1/2 INCH TO 6-1/2 INCHES IN DIAMETER



Note:

1. PRE-FABRICATED PIPE BOOT MUST HAVE RIB INTACT AT TOP REGARDLESS OF PIPE DIAMETER.

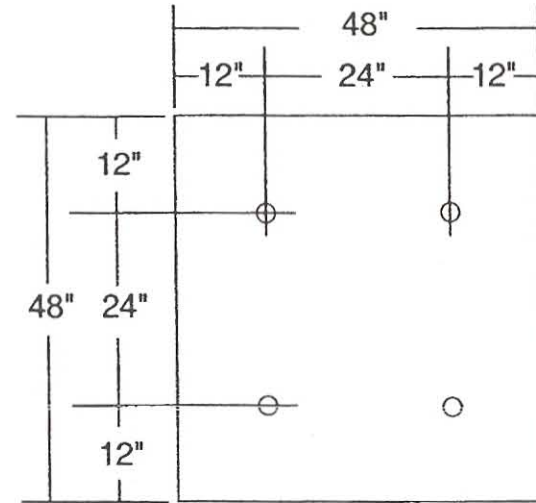
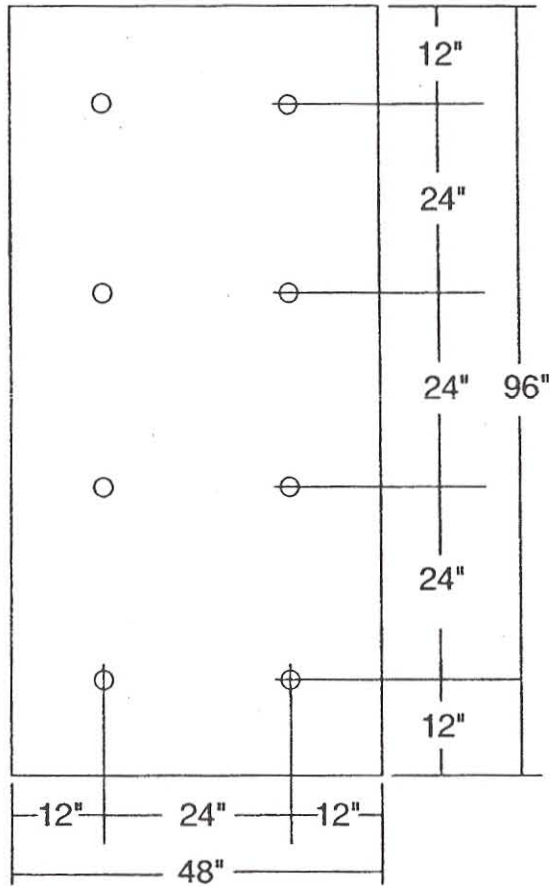
NP-4

PRE-FABRICATED PIPE BOOT ATTACHMENT

RPI
Roofing Products International, Inc.

MINIMUM INSULATION FASTENING REQUIREMENTS FOR POLYISOCYANURATE INSULATION

4' X 8' Insulation Boards



4' X 4' Insulation Boards

Notes:

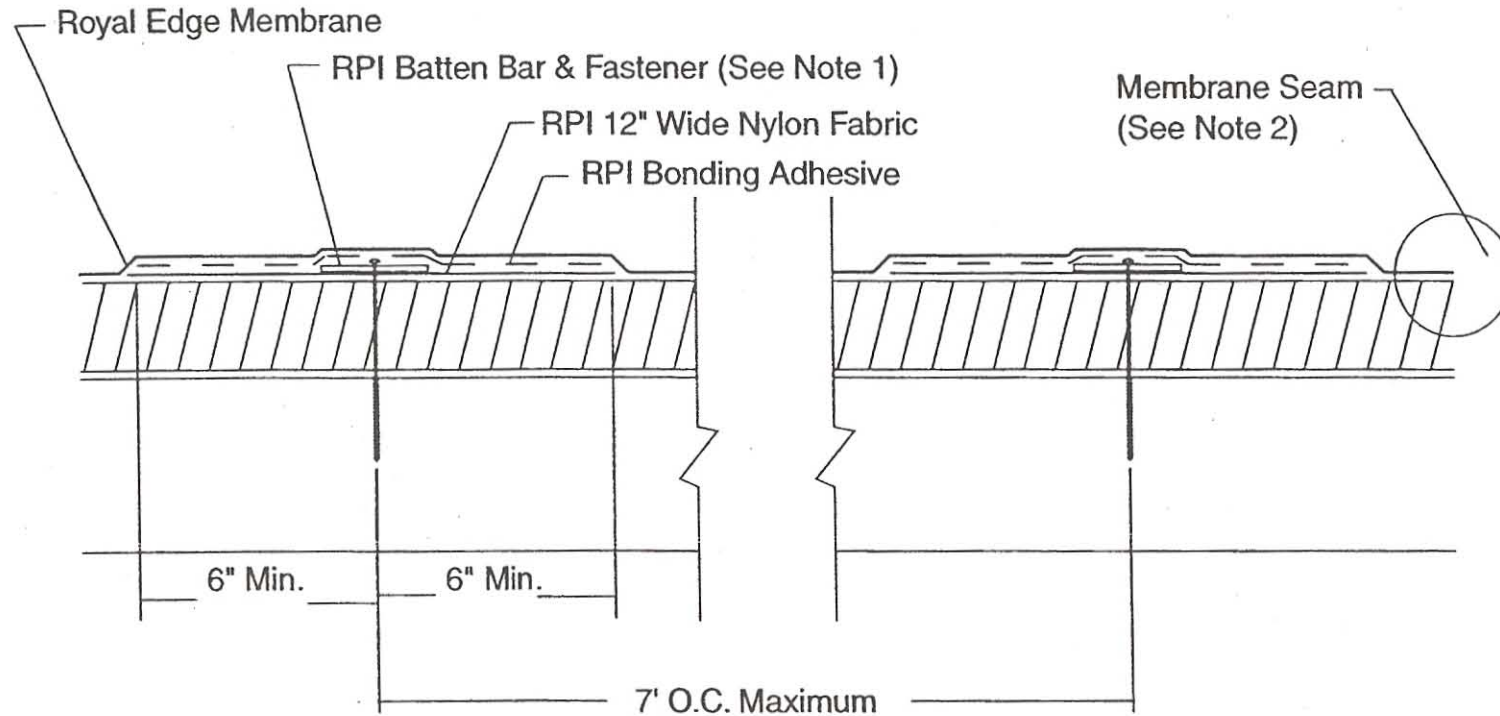
1. The Following Tolerances on Dimensions Between Fasteners Are Permitted:

Dimensions Shown On Drawing	Permitted Tolerances
12"	$\pm 1"$
24"	$\pm 2"$

**NP-6 INSULATION ATTACHMENT
(POLYISOCYANURATE LESS THAN 2")**



BACK SIDE OF MEMBRANE DOES NOT REQUIRE CLEANING
PRIOR TO APPLICATION OF RPI BONDING ADHESIVE.

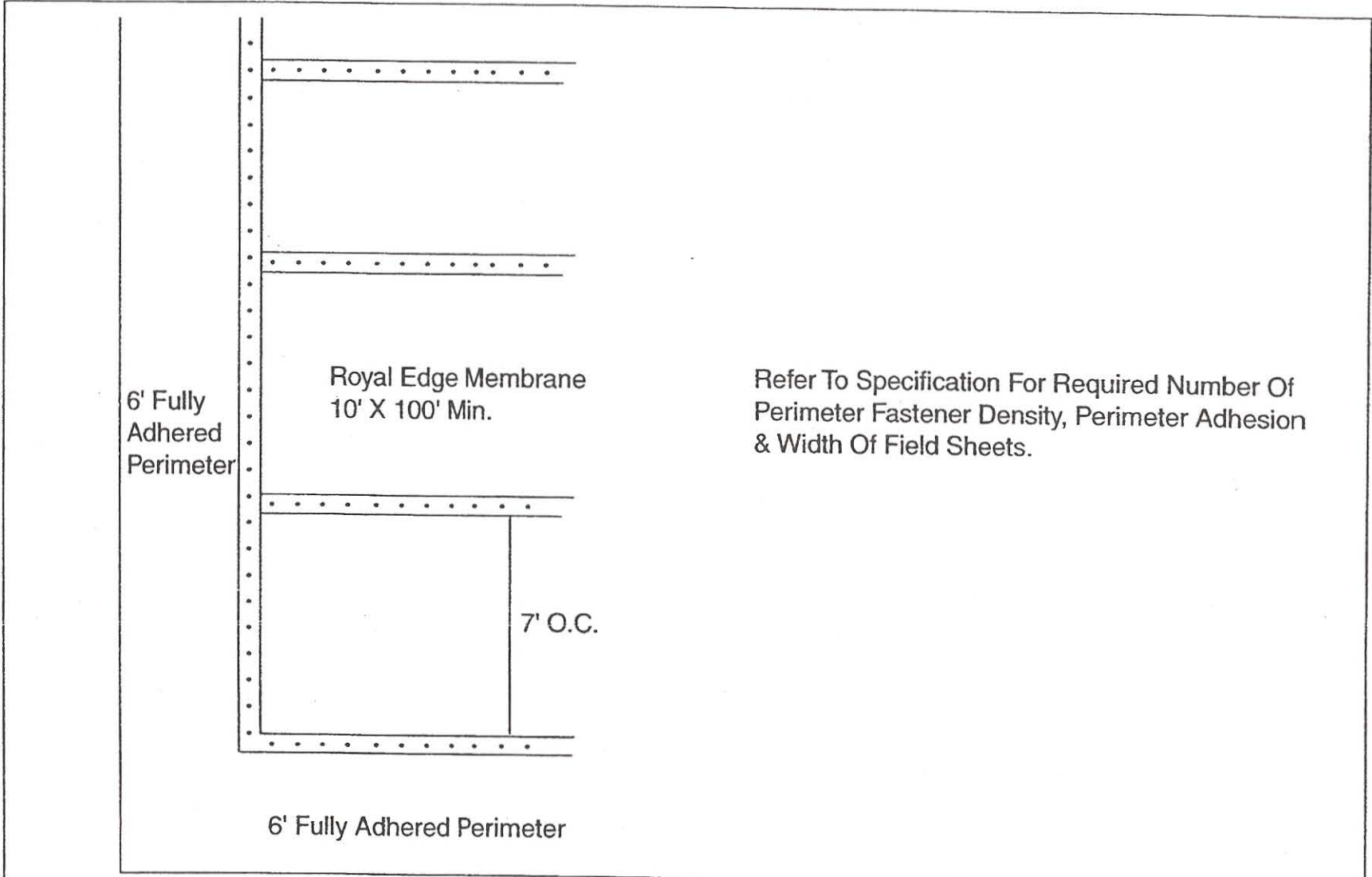


Notes:

1. Refer To Specifications For Fastening Rates.
2. Membrane Seam Shall Be Located A Minimum Of 12 Inches Away From Nylon Fabric

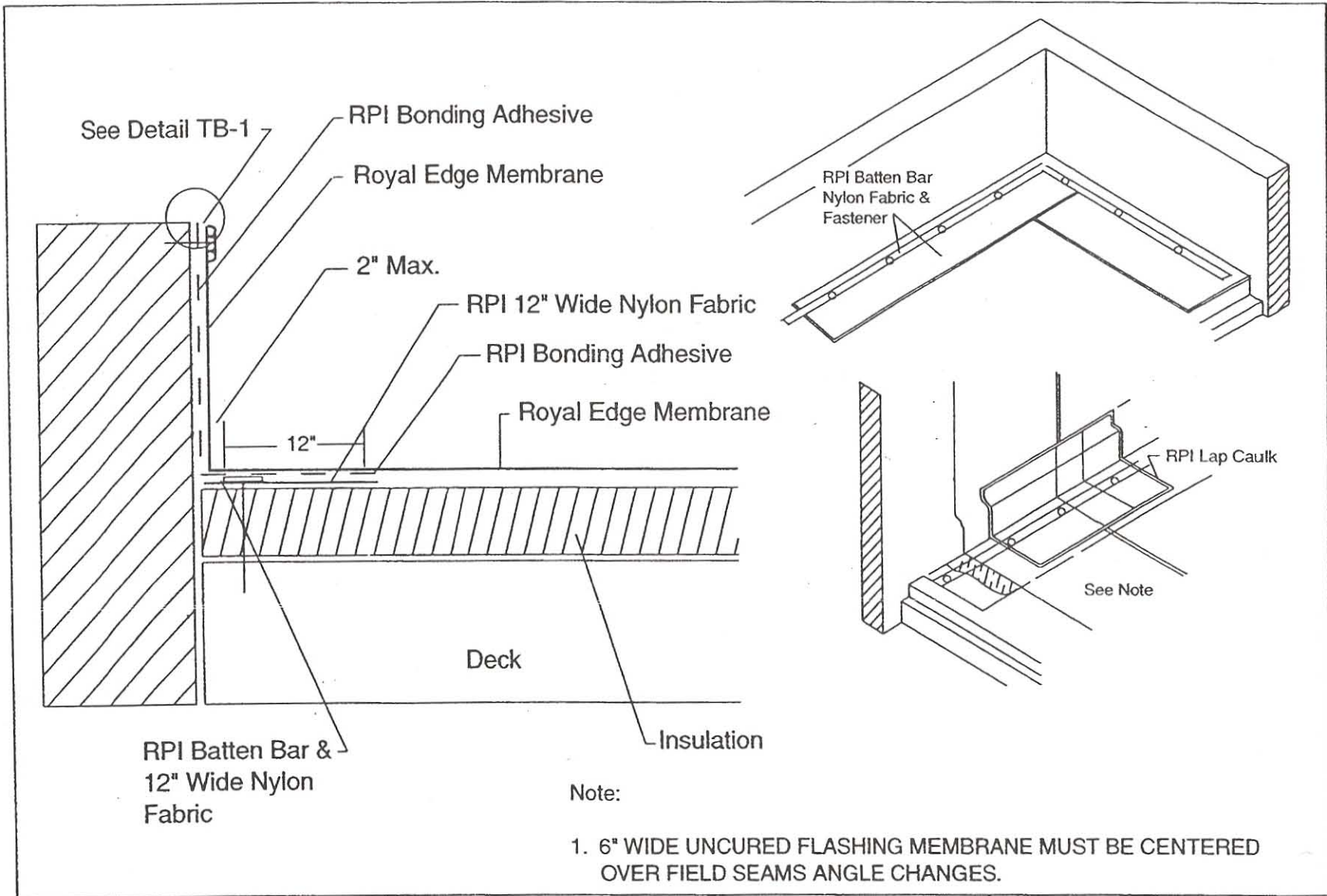
NP-1
NON-PENETRATING BATTEN (CROSS SECTION)

RPI
Roofing Products International, Inc.



NP-3
PERIMETER MEMBRANE ADHESION





NP-5
NON-PENETRATING SYSTEM CURB FLASHING

